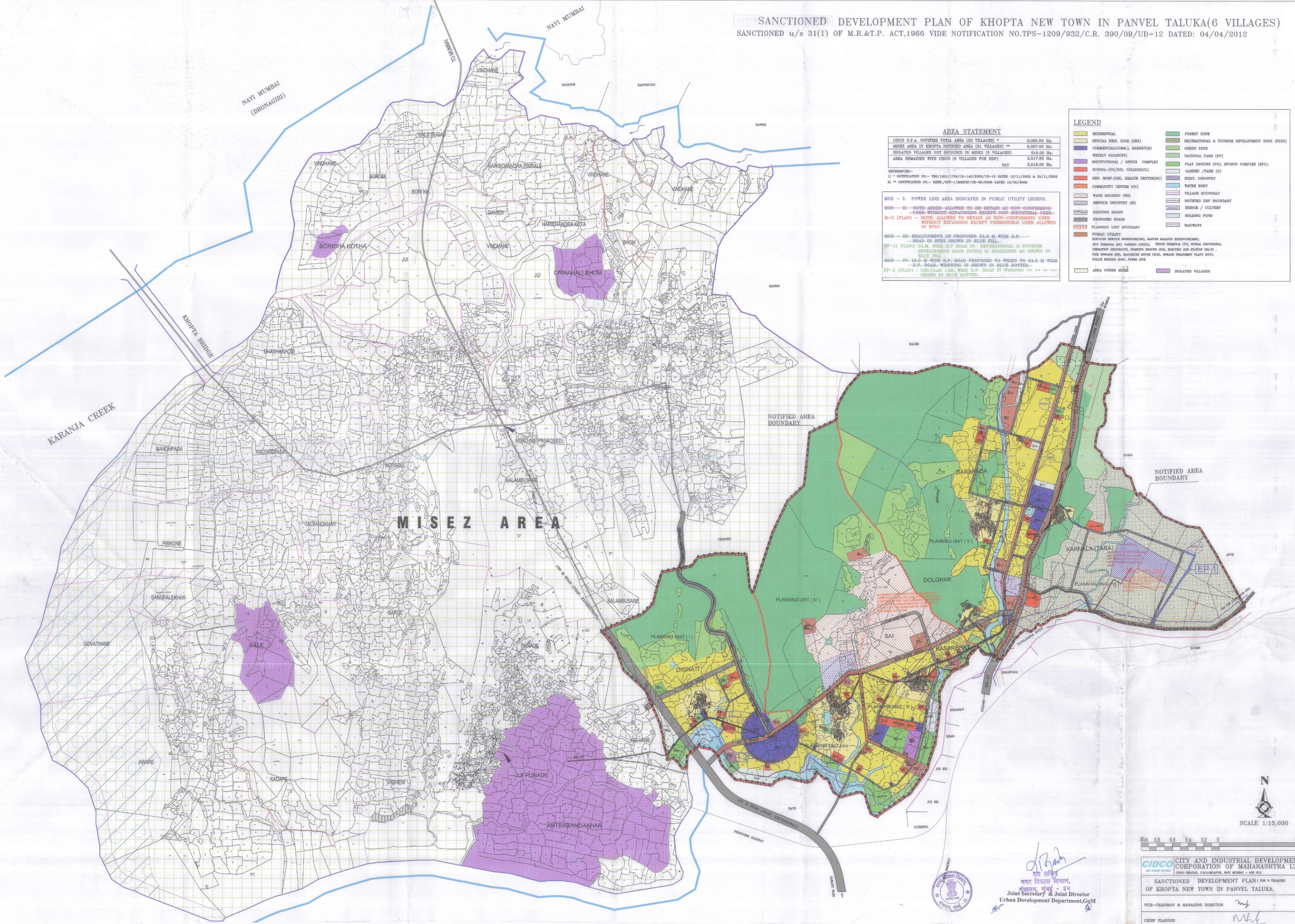


NOT SANCTIONED DEVELOPMENT PLAN OF KHOPTA NEW TOWN IN PANVEL TALUKA(6 VILLAGES)
 SANCTIONED u/s 31(1) OF M.R.&T.P. ACT,1966 VIDE NOTIFICATION NO.TPS-1209/932/C.R. 390/09/UD-12 DATED: 04/04/2012



AREA STATEMENT

CIDCO S.P.A. NOTIFIED TOTAL AREA (22 VILLAGES) *	9,393.55 Ha.
MISEZ AREA IN KHOPTA NOTIFIED AREA (21 VILLAGES) **	6,357.00 Ha.
ISOLATED VILLAGES NOT INCLUDED IN MISEZ (5 VILLAGES)	519.00 Ha.
AREA REMAINED WITH CIDCO (6 VILLAGES FOR DDP)	2,517.55 Ha.
SAY	9,393.55 Ha.

REFERENCES:-
 1) * NOTIFICATION NO.- TBS/1801/1709/CR-145/2008/UD-12 DATED 18/11/2008 & 25/11/2009
 2) ** NOTIFICATION NO.- SEER/OFF-1/MISEZ/CR-98/2008 DATED 16/06/2008

MOD - I: POWER LINE AREA INDICATED IN PUBLIC UTILITY LEGEND.
 MOD - II: NOTE ADDED-ALLOWED TO BE REPAIR AS NON-CONFORMING USER-WITHOUT EXPANSION-EXCEPT NON-INDUSTRIAL USER-M-2 (PLAN) - NOTE ALLOWED TO RETAIN AS NON-CONFORMING USER WITHOUT EXPANSION EXCEPT PERMISSIBLE USER ALLOWED IN RTDZ
 MOD - III: REALIGNMENT OF PROPOSED 24.0 M WIDE D.P. ROAD IN RTDZ SHOWN IN BLUE DOTTED.
 EP-1 (PLAN): 24.0 M WIDE D.P. ROAD IN RECREATIONAL & TOURISM DEVELOPMENT ZONE (RTDZ) IS REALIGNED AS SHOWN IN BLUE FILL.
 MOD - IV: 16.0 M WIDE D.P. ROAD PROPOSED TO WIDEN TO 24.0 M WIDE D.P. ROAD. WIDENING IS SHOWN IN BLUE DOTTED.
 EP-2 (PLAN): CIRCULAR 1.0 M WIDE D.P. ROAD IS WIDENED TO 24.0 M WIDE D.P. ROAD AS SHOWN IN BLUE DOTTED.

LEGEND

RESIDENTIAL	FOREST ZONE
SPECIAL REEL ZONE (SRZ)	RECREATIONAL & TOURISM DEVELOPMENT ZONE (RTDZ)
COMMERCIAL(COMM), MARKET(M)	GREEN ZONE
WEEKLY BAZAR(WB)	NATIONAL PARK (NP)
INSTITUTIONAL / OFFICE COMPLEX	PLAY GROUND (PG), SPORTS COMPLEX (SPC)
SCHOOL-(PS/HS), COLLEGE(CL)	GARDEN / PARK (G)
GEN. HOSP.(GH), HEALTH CENTER(HC)	EXIST. INDUSTRY
COMMUNITY CENTER (CC)	WATER BODY
WARE HOUSING (WH)	VILLAGE BOUNDARY
SERVICE INDUSTRY (SI)	NOTIFIED DDP BOUNDARY
EXISTING ROADS	BRIDGE / CULVERT
PROPOSED ROADS	HOLDING POND
PLANNING UNIT BOUNDARY	RAILWAYS
PUBLIC UTILITY	ISOLATED VILLAGES

PUBLIC UTILITY
 ELECTRIC SERVICE RESERVE(SRS), MASTER BALANCE RESERVE(SMR), BUS TERMINAL (BT), PARKING LOT(P/L), TRUCK TERMINAL (TT), BURIAL GROUND(BG), CREMATION GROUND(CG), BOWLING GROUND (BG), ELECTRIC BUS STATION (EBS/S), FUEL STATION (FS), WASTE TREATMENT PLANT (WTP), STORAGE TREATMENT PLANT (STP), POLICE STATION (PST), POWER LINE.

N
SCALE 1:15,000

Km 0.8 0.6 0.4 0.2 0 0 Km

CIDCO CITY AND INDUSTRIAL DEVELOPMENT CORPORATION OF MAHARASHTRA LTD.
 CIDCO BHAYAN, C.B.D. BELAPUR, NAVI MUMBAI - 400 614
 नगर विकास विभाग,
 मंत्रालय, मुंबई - ३२
 Joint Secretary & Joint Director
 Urban Development Department, CoM

SANCTIONED DEVELOPMENT PLAN (FOR 6 VILLAGES) OF KHOPTA NEW TOWN IN PANVEL TALUKA.
 VICE-CHAIRMAN & MANAGING DIRECTOR
 CHIEF PLANNER
 ADDL. CHIEF PLANNER & TOWN PLANNING OFFICER